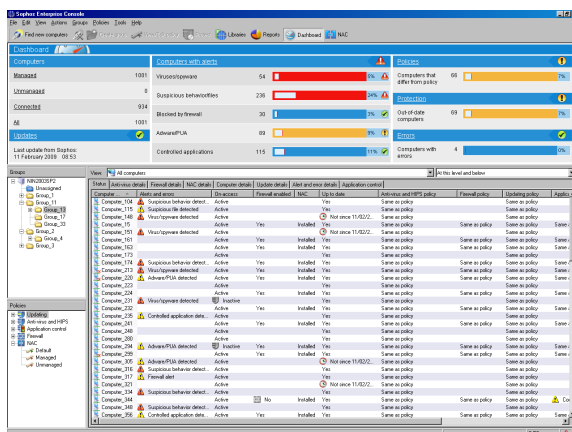


Sophos Enterprise Console

Sophos Enterprise Console™ is part of Endpoint Security and Data Protection. It automates the policy-based management and enforcement of Sophos Anti-Virus and Sophos Client Firewall and Sophos NAC. The single console with its security dashboard and automatic email alerts simplifies the deployment and updating of anti-malware, firewall, host intrusion prevention, device control, application control, and endpoint assessment and control as well as allowing centralized clean-up of malware.

One simplified, automated console reduces complexity

- Sophos Anti-Virus and Sophos Client Firewall can be installed and updated across Windows, Mac OS X, Linux and UNIX computers – including remote computers.
- Sophos NAC can be installed and managed on Windows computers providing fundamental endpoint assessment and control.
- The Sophos Security Dashboard provides an at-a-glance view of security status across all the computers on the network. Outbreak risks are constantly monitored and automatic email alerts are sent when your chosen security thresholds are threatened.
- The flexibility of different computer discovery methods – including network find, IP/Subnet and Microsoft Active Directory® – ensures that protection can be rapidly deployed.
- Synchronization with Active Directory ensures that when new computers join your network they are automatically protected and your chosen security policy is automatically enforced.
- Administrators can delegate limited access to trusted users without handing over full administration capabilities. Helpdesk console allows users to take specific remediation actions, while read-only console allows them a view of the situation but without the permission to take any action.
- Security policies can be quickly created and enforced using Sophos ActivePolicies™ in Enterprise Console. A single policy can be created once and applied across multiple groups, and across Windows, Mac, Linux and UNIX computers.



Key benefits

- » Provides scalable management across tens of thousand of Windows, Mac OS X, Linux and UNIX computers.
- » Reduces complexity and cost of managing anti-virus, anti-spyware, anti-adware, firewall, intrusion prevention, device control, application control and endpoint assessment and control
- » Monitors security status providing an at-a-glance view of all alerts and policy compliance across all the computers on the network
- » Enables the easy discovery of all computers on the network and centrally deploys across the network from a single console
- » Synchronizes with Microsoft Active Directory to automatically protect new computers as they join the network
- » Monitors and controls suspicious files and behavior, providing a complete host intrusion prevention system (HIPS)
- » Controls removable storage devices and the installation and use of legitimate software applications like VoIP, P2P, IM and games
- » Quickly creates and enforces security policies across multiple groups, using Sophos ActivePolicies™
- » Enables centralized clean-up of malware and potentially unwanted applications
- » Provides role-based administration privileges assigned with helpdesk and read-only consoles
- » Allows management of networked computers without end-user knowledge or involvement
- » Generates graphical reports on virus alerts, infections, and protection status
- » Includes 24x7x365 support for the duration of the license and one-to-one assistance.

Scalable, centralized control of more than just anti-virus

- Enterprise Console simplifies the management of anti-virus, anti-spyware, anti-adware, client firewall, host intrusion prevention, device control, application control and endpoint assessment and control.
- Legitimate software applications like VoIP, P2P, IM, media players and games can be blocked or authorized for different groups of computers using ActivePolicies™ in Sophos Enterprise Console. For example, VoIP could be switched off for office-based desktop computers, yet authorized for remote computers.
- Device Control blocks or allows removable storage including USB sticks, music players, external hard disks, CD/DVD drives and wireless connection technologies: Wi-Fi, Bluetooth and Infrared (IrDA). Policies based upon groups can be created centrally and device block events are reported instantly via the Enterprise Console dashboard.
- Runtime analysis, buffer overflow and unique pre-execution protection provide a complete host intrusion prevention system (HIPS) without the need for complex installation and configuration. This proactive detection of malware, suspicious files and suspicious behavior is monitored and controlled from Enterprise Console.
- Sophos Enterprise Console allows the assessment and control agent and policies to be deployed and managed across all Windows computers.
- MSDE or SQL Server database integration provides a choice of simplicity and scalability to suit all sizes of enterprise networks.

Automated, powerful management

- Centralized disinfection and clean-up of malware across the network is performed in a single, simple operation from the console.
- Security and management information is delivered through customizable, integrated graphical reports. Virus alerts can be emailed instantly or to schedule and are displayed on Enterprise Console's security dashboard.
- Rapid threat analysis from SophosLabs and the fastest updates in the industry are downloaded as frequently as every ten minutes.

Industry-leading expertise 24/7

- Our 24/7 customer support operation is highly acclaimed, while SophosLabs™, our global network of threat analysis centers, provides a rapid response to emerging and evolving threats.

Languages available

- English, French, German, Japanese, Italian, Spanish, Simplified Chinese and Traditional Chinese

System requirements

Hardware

- » Minimum: Pentium III 450 MHz or equivalent

Management server

- » **Windows**
Server 2008/Server 2003/2000 Server
- » **VMWare**
ESX 3.0, 3.5/Workstation 5.0/
Server 1.0

Remote console

- » **Windows**
2003/2000 Pro or Server/
XP Pro
- » **VMWare**
ESX 3.0, 3.5/Workstation 5.0/
Server 1.0

Platforms managed

- » **Windows**
2008/Vista/2003/XP/2000/
98/95/NT4
- » **Mac OS X**
Versions 10.4/10.5
- » **Linux***
- » **UNIX***

Disk space

- » Minimum 150 MB plus a maximum of 2 GB database space (MSDE)

Memory

- » Minimum 512 MB

* For full details, visit www.sophos.com

