



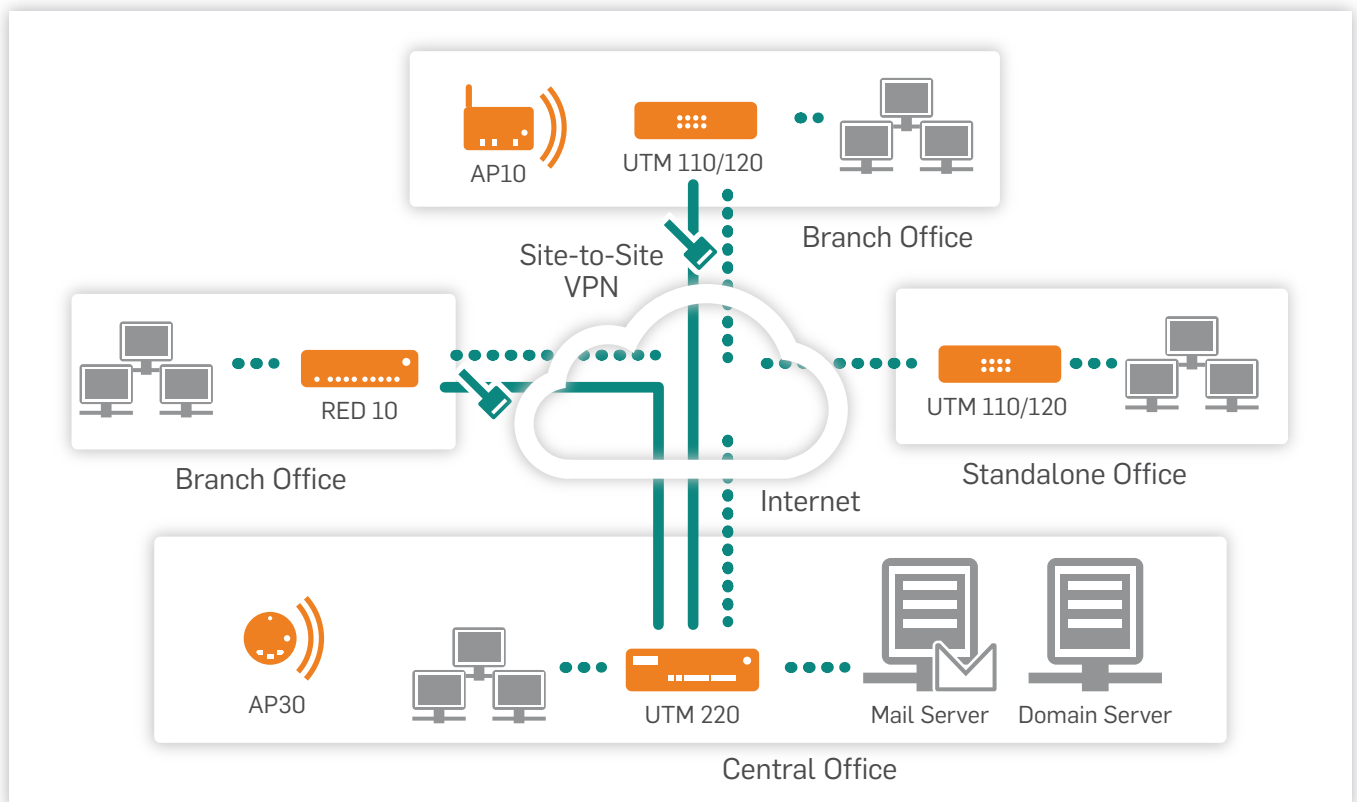
Sophos UTM 220

Unified protection for mid-sized business networks

- ▶ **Easy management:** You can manage all settings via a web-based graphical user interface (GUI). There's no need to use a command line or third-party software.
- ▶ **Extensive reporting:** Gain insight into system status, detected malware and accessed resources.
- ▶ **Clean Internet access:** Sophisticated network, mail and web filters protect your network and control application usage.
- ▶ **Protected data:** Strong encryption protects data transferred between offices and mobile workers or delivered via email.
- ▶ **Complete UTM protection:** The full suite of optional security features is available on all Sophos UTM appliances.
- ▶ **Flexible deployment:** Securely connect branch offices to your headquarters while completely protecting small business locations.



Sophos UTM 220 is designed to provide complete protection for mid-sized businesses and offices with up to 300 users. Its flexibility and excellent price performance make it a perfect choice for organizations seeking complete, cost-effective perimeter security.



Deployment scenario of Sophos UTM 220

Your Benefits

- ▶ Comprehensive enterprise-class security even for the small to mid-size business
- ▶ Familiar web-based graphical user interface (GUI) for complete system management
- ▶ End-user self-servicing portal frees administrators from daily spam and VPN management tasks
- ▶ Automatic system updates make manual software downloads unnecessary
- ▶ Integrated hard drive for full local logging, reporting and email quarantine management

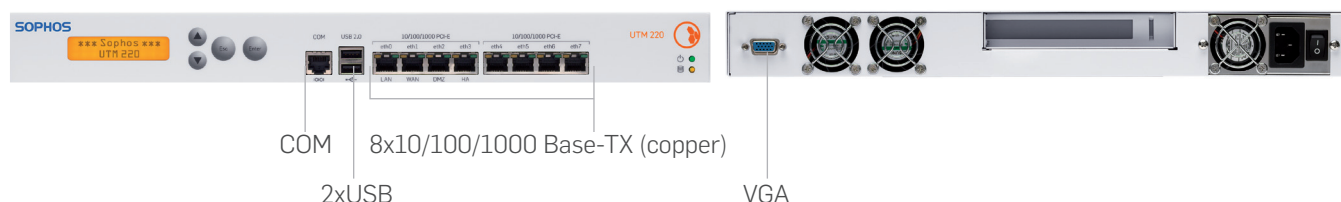
Technical Specifications

Appliance	Sophos UTM 220
Security applications	
Essential Network Firewall	Included
UTM Network Protection	Optional subscription
UTM Email Protection	Optional subscription
UTM Web Protection	Optional subscription
UTM Webserver Protection	Optional subscription
UTM Wireless Protection	Optional subscription
UTM Endpoint Protection	Coming soon
Capacity	
Maximum licensed users	Unrestricted
Recommended users*	81-300
Firewall throughput	3Gbps
IPS throughput	750Mbps
VPN throughput	480Mbps
Antivirus throughput	165Mbps
UTM throughput	95Mbps
RED throughput	80Mbps
Email throughput (scanned/seen)	52,000/400,000 emails/h
Concurrent connections	300,000
Hard drive for local quarantine and logs	Integrated
Physical interfaces	
Ethernet interfaces	8xGigabit Ethernet
I/O ports	2xUSB, 1xCOM (RJ45), 1xVGA
LED display	Power, HDD
Power supply	200W ATX: 100-240V, 50-60Hz, 3-6A
Physical specifications	
Mounting	1U rack mount
Dimensions (WxHxD)	426x44x365mm
Weight	5.5 kg/12lbs
Power consumption (standby/full)	70.27 Watts
Operating temperature	0-40°C (operating), -20-80°C (storage)
Humidity	10%-90%, non-condensing
Safety regulations	
Certifications	CE, FCC Class A, CB, VCCI, C-Tick, UL

*Numbers are a rough guideline only. They may be much higher in specific environments depending on user characteristics, application usage, security configurations and other factors.



Hardware appliance



Add-ons

Every company's network and operating mode is different. We provide you with a number of add-ons you can select and combine to suit your needs.

Essential Network Firewall

Offers basic security functions to help protect your business network.

UTM Network Protection

Protects against sophisticated types of malware, worms and hacker exploits that can evade your basic firewall.

UTM Email Protection

Secures your corporate email from spam and viruses while protecting sensitive information from cybercriminals.

UTM Web Protection

Protects your employees from web threats while controlling how they spend time online.

UTM Webserver Protection

Protects your web servers and applications like Outlook Web Access (OWA) from modern hacker attacks.

Coming soon: UTM Endpoint Protection

Protects endpoints at any location against malware and data loss with a centrally deployed security agent.

UTM Wireless Protection

Dramatically simplifies the operation of secure and reliable wireless networks.

RED (Remote Ethernet Device)

It's the easiest and most affordable way to secure your branch offices.

Try it now for free

Register for a free 30-day evaluation at sophos.com/try-utm



Common Criteria
certified



United Kingdom Sales:
Tel: +44 (0)8447 671131
Email: sales@sophos.com

North American Sales:
Toll Free: 1-866-866-2802
Email: nasales@sophos.com

Australia & New Zealand Sales
Tel: +61 2 9409 9100
Email: sales@sophos.com.au

Boston, USA | Oxford, UK
© Copyright 2012. Sophos Ltd. All rights reserved.
All trademarks are the property of their respective owners.

Sophos Data Sheet 2.12v1.dNA

SOPHOS